

# Church of the Annunciation Capital Campaign Newsletter

701 North Jefferson Street, Kearney, MO 64060  
816-628-5030 - [Annunciation@fairpoint.net](mailto:Annunciation@fairpoint.net)  
[www.AnnunciationKearney.com](http://www.AnnunciationKearney.com)

November 2016

Volume 1: 3



## A Message from Fr. Al

Saint Teresa of Calcutta visited Australia. A new recruit to the monastery in Australia was assigned to be her guide and “gofer” during her stay. The young man was so thrilled and excited at the prospect of being so close to this special woman. He dreamed of how much he would learn from her and what they would talk about. But during her visit, he became frustrated. Although he was constantly near her, he never had the opportunity to say one word to St. Teresa. There were always other people for her to meet. Finally, her tour was over, and she was due to fly to New Guinea. In desperation, the friar had his opportunity to speak to St. Teresa. He said to her, “If I pay my own fare to New Guinea, can I sit next to you on the plane so I can talk to you and learn from you?” St. Teresa looked at him. “You have enough money to pay airfare to New Guinea?” she asked. “Oh, yes,” he replied eagerly. “Then give that money to the poor,” she said. “You’ll learn more from that than anything I can tell you.” The problem was the young man wanted to experience a feeling when he needed to simply learn by doing.

Dear friends, throughout this campaign, my prayer has been that we, as a community, build a culture of generosity where all of us become more generous with our time, talent, and treasure. This story illustrates it so well. If we want to be better stewards of God’s gifts, we must learn by giving these precious resources away. On Commitment Weekend, December 10-11, you will be asked to make an investment in our faith community to ensure that we continue to be a source of encouragement, faith, and God’s love to the world. Join me in making commitments to the **Our Faith, Our Family, Our Home Campaign** and praying for our parish and its leadership so we make the right decisions for our faith family.



God bless you,  
  
Fr. Al Ebach C.P.P.S

## Campaign Prayer

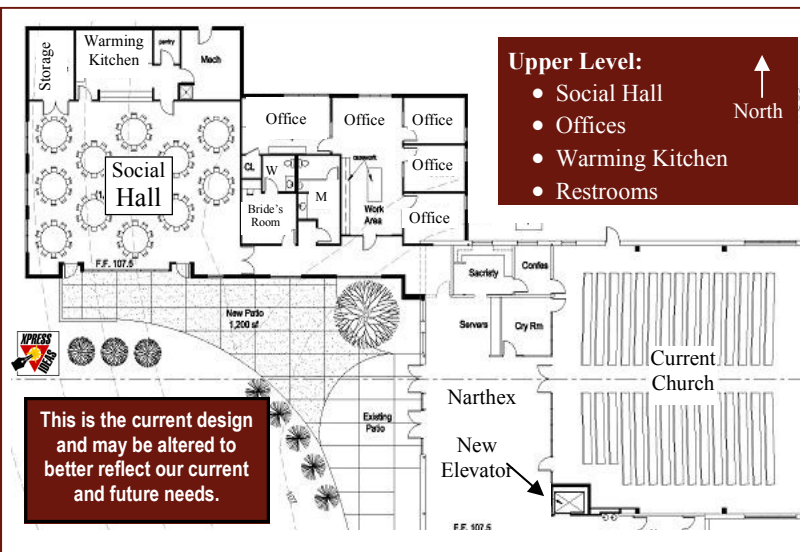
Praise be to God  
our Father.  
You created us  
out of love  
and all that we  
have belongs to You.  
In gratitude, may we  
return that love  
by sharing our gifts  
with others,  
bearing witness  
to our faith,  
and teaching our  
children in Your ways.

Mary said at the  
Annunciation,  
“Behold, I am the  
handmaid of the Lord,  
may it be done to  
me according to  
your word.”

Help us to follow  
Mary’s example and  
be open to Your will.  
Through Christ, Our  
Lord. Amen.

Jesus, Mary and  
Joseph,  
Pray for us.

## WE HAVE AN EXCITING PLAN IN PLACE!

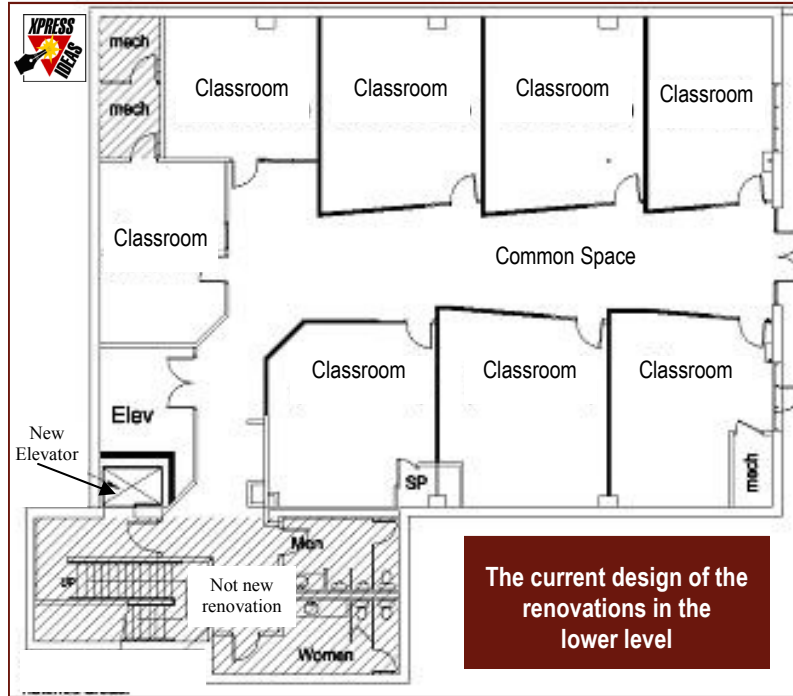


On November 15, our parish architect, Dan Himmelburg, met with the Pastoral Council, Finance Council and Building Committee to present three different construction options with three different costs. After much discussion and discernment, those present chose the middle of the road costly option because they believed it will satisfy our current and future needs best. There is more work to be done on the plan but here is the general design of what it will look like.

Continued on page 2

Stewardship is a very rich and beautiful activity that is a confident, joyful, and hope-filled expression of our ministering to each other, each from the riches that he or she possess, in order to bring about the Kingdom of God.

**WE HAVE AN EXCITING PLAN IN PLACE!** Continued from page 1



forward. We currently have \$100,000 in savings so we will need to raise \$1,265,000.

In September, the Campaign Steering Committee set a campaign goal of \$950,000. How will we raise \$1,265,000 needed for our plan?

1. The parish feasibility survey that was conducted in August suggested that we have an 80% chance of raising \$800,000, a 50% chance of raising \$1,100,000 and a 20% chance of raising \$1,400,000

This plan provides the meeting/classroom space we desperately need and a social hall with kitchen that will enhance our parish community building activities and be available for parish meetings.

The total cost of the plan including furnishings, campaign fees, architectural fees, etc. is \$1,950,000 in today's dollars. Since the diocese requires that a parish has 70% of money needed in either cash or pledges, we will need \$1,365,000 to be approved to go

These projections were made when the parish had no specific plans in place.

2. The Campaign Steering Committee, without a plan in place, decided to set a conservative goal for the campaign of \$950,000. Now that we have an exciting plan in place, it is believed that parishioners will be much more generous.

The parish leadership is committed to engaging the entire parish in the review process prior to accepting the final design of our plans. We will keep you posted.

**Campaign Q & A**

**Q: How much are we being asked to commit to our campaign?**

Your contributions to the campaign are an investment in our faith formation and the future of our parish. Each person or family is asked to make an equal sacrifice — not an equal commitment. While there is no set amount, we suggest that each household consider committing 5 percent or more of its total annual family income each year for the three years of the campaign.

For those on limited or fixed incomes, we suggest that you consider a 5-percent or higher gift from household assets (e.g. investments, savings, real property, retirement funds, etc.), rather than from annual income,

offered either in a lump-sum gift or spread over the three years of the campaign.

*To help you discern your level of commitment, we provide the following chart:*

5% Investment Chart				
Monthly Income	Weekly Pledge	Monthly Pledge	Annual Pledge	Total 3-Year Pledge
\$500	\$6	\$25	\$300	\$900
\$1,000	\$12	\$50	\$600	\$1,800
\$2,000	\$23	\$100	\$1,200	\$3,600
\$3,000	\$35	\$150	\$1,800	\$5,400
\$5,000	\$58	\$250	\$3,000	\$9,000
\$7,000	\$81	\$350	\$4,200	\$12,600
\$10,000	\$115	\$500	\$6,000	\$18,000

Continue on page 3

**Q & A** *Continued from page 2*

**Q: What are the projected demographics for Kearney?**

Kansas City Business Journal in March ranked Kearney as the second fastest growing community in the Kansas City metro area. From 2010 – 2015, Kearney grew at a rate of 7.7%. It is projected to grow another 7.8% by 2020.

**Q: Why do we need diocesan approval for our plans?**

The diocese owns the property and structures of the parish. Once the project is approved to move forward, then all the resources of the diocese are used to ensure that the new construction is built correctly and meets our needs.

**Q: Who is making the decisions regarding moving forward with the campaign and the location, size and cost of the expansion?**

We have a Building Committee who has been involved with the design of the structure. The Finance Committee has been exploring the fiscal issues surrounding our plan. The Pastoral Council has been shepherding the entire process and makes the final decisions regarding going forward. The parish will be consulted before a final plan is approved.



**Q: How can we involve our children in the Campaign?**

An old teaching adage says:

- Tell me, I forget.*
- Show me, I remember.*
- Involve me, I understand.*

If children are going to understand stewardship, it is important to involve them both in the campaign activities and in the decision-making process that leads to a family’s commitment to the campaign. Here are some suggestions for involving children in stewardship:

1. Hold a family meeting to discuss what commitment the family will make to the campaign and how it will impact the family. Encourage the children to express their feelings and have the children help determine ways the family can cut back on

other expenses to fulfill their commitment. Children will take much more interest and ownership in the action if they are involved in the decision.

2. Invite the children to give up something or to do something special to raise money for the campaign. Connect their sacrifice and work to the vision of having a more welcoming church and sharing Jesus’ story with more children.
3. Teach children that taking the time to pray is good stewardship. Prayer is giving time to God. Prayer is also a gift we can give to someone else when we pray for him or her.
4. Encourage the children’s religious education classes to discuss stewardship. After class, ask your child what they learned and tell them what you are doing to be good stewards.

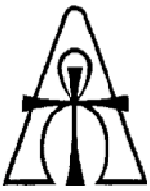
**Q: What are some ideas for families to save money and participate in the *Our Faith, Our Family, Our Home Campaign***

- Instead of ordering your weekly pizza out, pick up a pizza at the store and bake it at home
- Delay the purchase of the new car for a year
- Don’t go to Starbucks as often
- Give up the premier stations on your cable
- Give up cable TV for a year or three
- Go out on cheaper dates
- Delay the addition to the house by 3 months
- Consider donating stock or bonds
- Get rid of a car or truck – give it to the church
- Donate an old IRA
- Give land or a piece of rental property
- Convert collectables into a gift to the parish
- Sell some stuff on Craig’s list
- Have a garage sell

Continue on page 4



Our Faith,  
Our Family,  
Our Home  
Campaign  
is an  
opportunity  
to make an  
investment  
in the faith  
formation  
of every  
member of  
our parish  
and in the  
future  
of our  
spiritual  
home.



## Church of the Annunciation

P.O. Box 599  
701 N. Jefferson St.  
Kearney, MO 64060-0599

Return Service Requested

Non-Profit Org.  
U.S. Postage  
PAID  
Kearney, MO 64060  
Permit No. 24

Make an investment in your faith  
community by turning in your commitment  
card on commitment weekend  
December 10 - 11, 2016

ANNUNCIATION...  
*Our faith.*   
*Our family.*  
*Our home.*

### In thanks & recognition

Since 1983, parishioners of Church of the Annunciation have made the necessary sacrifices to ensure that we have a place to worship, learn and share as a community. We continue to thank and honor them for the sacrifices that they made on our behalf.

In recognition of the financial investment you are making to our parish, the parish will send you an attractive 4" by 6" Church of the Annunciation decal that will cling to any one of your windows in your car or house.



### Q & A Continued from page 3

**Q: When should we make our commitment?**

Dec. 10-11 is our Commitment Weekend. We ask that you bring the enclosed commitment card to Mass that weekend. If you will not be attending Mass that weekend, please mail your commitment card prior to Dec. 10.

**Q: How long will we have to fulfill our commitment, and what happens if our financial situation changes?**

Starting Jan. 1, 2017, you will have three years to fulfill your commitment. If you need to adjust your commitment, all you have to do is call the office and talk to our office manager, Megan Herndon at 816-628-5030.

**Q: May we contribute non-cash gifts to the campaign?**

Yes. You may consider donating cars, crops, land, or other items of value. Contributing stocks, bonds, and mutual funds that have been held for at least a year and have appreciated provide special tax advantages. Donors will receive a tax deduction for the full market value of the gift, but you will not have to pay capital gains tax on the appreciated amount. If you sell depreciated stock and contribute the proceeds to the parish, you will receive both a tax deduction for the gift and a deduction for the capital loss. Please consult your tax advisor or accountant to determine the best way to make a donation and take advantage of your tax savings.